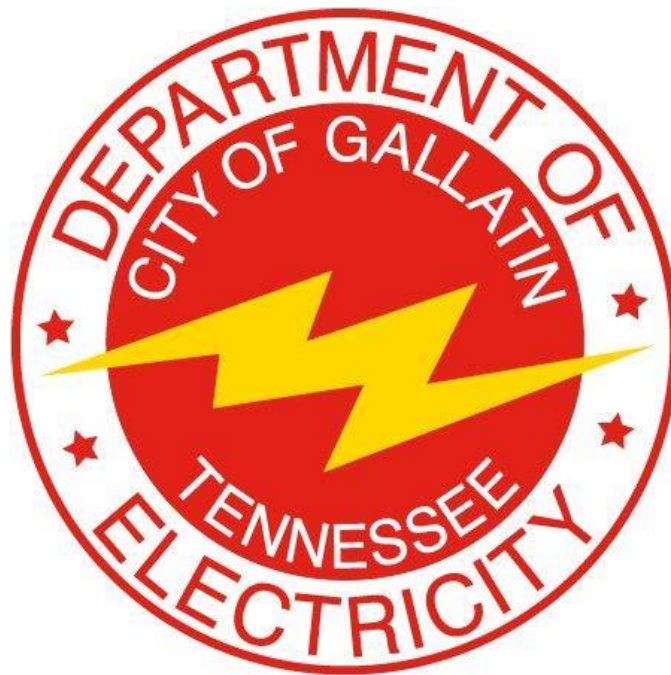


# Residential Electric Policy



7/19/16

# Table of Contents

<b>General Information.....</b>	<b>3</b>
Construction.....	3
Ownership .....	4
Apartments/Multi-Unit Dwellings.....	4
Modular and Manufactured Homes.....	4
<b>Secondary Termination Enclosures.....</b>	<b>5</b>
<b>Meter Bases.....</b>	<b>6</b>
<b>Decorative Street Lighting.....</b>	<b>7</b>
<b>Temporary Boards.....</b>	<b>8</b>
Guidelines.....	8
Diagram.....	9
<b>Specifications.....</b>	<b>10</b>
GDE Underground Service.....	10
Customer Owned Pole.....	10
Underground Primary/Secondary.....	10
Decorative Lights.....	12
Final Inspection Check List.....	13
Residential Worksheet.....	14
Multi-Family Worksheet.....	15
<b>Diagrams for Contractors.....</b>	<b>16</b>
Single Phase Transformer Ground Sleeve.....	16
Primary Vault Ground Sleeve.....	17
Secondary Vault.....	18
Pad mount Transformer Spacing.....	19
Conduit Layout (Overhead Primary) .....	20
Conduit Layout (Underground Primary) .....	21
Labeling for Multi Metered Installations.....	22

**All meter bases shall be Gallatin Dept. of Electric (GDE) approved meter bases, see GDE meter base policy. All meter base locations must be approved by GDE's Engineering Dept.**

### **Construction**

The complete use of underground electric facilities is required in all new subdivision developments, for all new residential (single unit) electric services, and where any existing service is relocated or upgraded, unless specifically waived in writing by the Gallatin Department of Electricity (GDE). Developers/Owners will be required to pay an aid to construction cost of \$1,000 per lot. Existing services that are relocated or changed from overhead to underground will only pay a cost of \$10 per foot if the extension is over 150'. The developer/owner will submit a final plat, provide an electronic cad layout/plat, request an electrical layout from GDE, provide all ditching and conduit, transport and place all vaults and required ground sleeves with a gravel base, call GDE for inspection of all ditching and conduit, backfill one foot, place marking tape and complete backfill (See **GDE's Residential Worksheet**, pg.14 for required steps). GDE will provide and install underground primary wire, transformers, primary connections, and switching cabinets.

Any residential lot that requires an electrical extension of more than 150' will be required to pay an additional aid to construction of \$10 per foot. The developer/owner will provide, install, own, and maintain all conduits. The owner shall also own and maintain all service wire on underground services above 400 amps. GDE will provide, install, own, and maintain all service wire for services 400 amps and below.

Provisions shall be made by the developer/owner (including ditching, backfilling, and conduit) to loop feed each primary line where practical as determined by GDE's Engineering Department. Overhead exceptions may be granted for major feeder lines as determined by GDE on a case by case basis. However, the standard will still be underground utilities. Exceptions will only be granted in letter form. GDE will provide standard above ground switching cabinets.

When the development requires the main line to be more than 200 amps on the primary lines but less than 400 amps, as determined by GDE, the developer will pay an aid to construction charge of \$50 per linear foot for any additionally required feeder lines. When the development requires the main line to be more than 400 amps on the primary lines, as determined by GDE, the developer will pay an aid to construction charge of \$65 per linear foot for any additionally required feeder lines.

Overhead exceptions may be granted for major feeder lines as determined by GDE's Engineering Department on a case by case basis. However, the standard will still be underground utilities. Exceptions will only be granted in letter form.

The developer shall be responsible for the cost of any line extension required to serve a development that is not within or adjacent to the current footprint of the Gallatin City limits and/or GDE's current service territory. Extension costs shall include: any expense of acquiring easements and needed right-of-way clearing as well as all construction labor and material necessary to reach the proposed development. Any cost associated with a development that is above and beyond the GDE's standard construction shall be at the expense of the developer. Costs could be back feed or redundant service requirements by the developer or below grade switchgear, or the like. GDE will maintain ownership of all primary infrastructure such as wire and transformers and be responsible for any replacement costs.

### Ownership/Repairs

Meter bases, service conduit from meter base to GDE's secondary equipment, risers, and point of attachment are the customer's property and the customer's responsibility to supply, maintain, and repair. GDE owns and maintains overhead (OH) and underground (UG) service wire, except on UG services over 400 amps, and OH service connections. The customer installs, owns, and maintains the conduit and service wire on underground services over 400 amps. The service size is the sum of all meter bases per building. Residential customers changing out meter bases, doing panel upgrades, or any major electrical repair will be required to update service to GDE specs as well as meeting all current National Electric Code (NEC) and National Electric Safety Code (NESC) requirements. Any overhead service installation must be approved by GDE's Engineering Department.

### Apartments/Multi-Unit Dwellings

The complete use of underground electric facilities is required in all new multi-family/apartment complex developments unless specifically waived in writing by GDE. The developer/owner will be required to pay an aid to construction cost of \$500 per unit for new construction. The developer will submit a final plat, provide an electronic cad/plat layout, request an electrical layout from GDE, provide all ditching and conduit, transport and place all vaults and required ground sleeves with a gravel base, call GDE for inspection of all ditching and conduit, backfill one foot, place marking tape, and complete backfill (See **GDE's Multi-Family Worksheet**, pg.15 for required steps).

The developer/owner will provide, install, own, and maintain all conduits. The owner shall also own and maintain all service wire on underground services above 400 amps. GDE will provide, install, own, and maintain all service wire for services 400 amps and below. The service size is the sum of all meter bases per building. Multi-tenant developments will be required to provide, install, and maintain service conduit and wire to all buildings if one building exceeds the 400 amp service size. GDE will not mix GDE service wire and customer service wire in these developments. All apartment/multi-unit dwellings shall have meter bases numbered to GDE specifications (see **Labeling for Multi Metered Installations**, pg.20). Multi-gang meter bases must be approved by GDE's Metering Department. Meter troughs will not be allowed (see **Secondary Termination Enclosures**, pg.5). GDE will provide and install underground primary wire, transformers, primary connections, and switching cabinets.

Provisions shall be made by the developer (including ditching, backfilling, and conduit) to loop feed each primary line where practical as determined by GDE's Engineering Department. Overhead exceptions may be granted for major feeder lines as determined by GDE on a case by case basis. However, the standard will still be underground utilities. Exceptions will only be granted in letter form. GDE will provide standard above ground switching cabinets.

### Modular and Manufactured Homes

Modular homes are defined as a house that comes in more than one piece and assembled on the home site. Manufactured homes are one-piece houses with axles, commonly referred to as "mobile homes" or "trailers". Meter bases may only be mounted on modular homes that have a permanent foundation, tongue removed, and are certified by the manufacturer that the building is rated for such an installation. These services will be underground. Homes not meeting these requirements and all manufactured homes will have underground service to a meter pedestal (pedestal must be approved by GDE's Metering Dept.) no more than 20' from building. Overhead service to risers or service poles will only be allowed if preapproved by the GDE Engineering Dept. The service poles will meet the minimum specs listed in **GDE Pole Setting Specs**, pg.10, along with all current NEC/NESC code requirements.

### Secondary Termination Enclosures

GDE shall not connect to any new troughs. Secondary termination enclosures (provided by the Customer) will be used on all new services requiring multiple meters where ganged meter bases are not used. Existing troughs shall be replaced with secondary termination enclosures under the following circumstances: adding new load, upgrading service, adding a new service, or replacing GDE's line side conductors.

Each individual service in the termination cabinet shall be labeled by unit number, suite number, or space number on the service cable for disconnect/reconnect purposes. The labeling must be approved by GDE's Engineering Department. All conductors shall be routed behind the termination cabinet busbars.

Enclosures are the property of the Customer. There is a requirement for a GDE lock on these enclosures. A GDE employee will unlock the enclosure for the Customer when necessary and upon request.

The following are acceptable part numbers for termination enclosures. Any enclosure not listed must be approved by GDE's Engineering Department.

#### CMC (Connector Manufacturing Company) Wall Mounted three phase

Catalog Number	Cond. Range AWG	No. of Cond. Per Phase	W	D	H	Phase Cover	U.L. Listed Amp Rating	
			Dimensions - Inches				Copper	Aluminum
LWTE21-500	10-500 kcmil	21	32.00	16.00	51.00	TEC-30	3800	3100
LWTE14-750	2-750 kcmil	14	32.00	16.00	51.00	TEC-30	3325	2695
LWTE14-1000	1/0-1000 kcmil	14	32.00	16.00	51.00	TEC-30	3815	3115

**A disconnect is allowed in front of the termination enclosure. A disconnect is not allowed between the termination enclosure and the meter base.**

## Gallatin Department of Electricity Approved Meter Bases

**GDE**

P.O.Box 1555  
Gallatin, TN. 37066  
(615) 452-5152  
(615) 452-6060 Fax

### Self Contained

Size	Phases	Type	Milbank	Durham	Siemens	Eaton
200 Amp	Single	OH	U7021-DL-TG-BL	RS213N	UAT3 / HQU4	UTRS202BCH
200 Amp	Single	UG	U1980-0-BL	UTRS223A	UAS8/UAS9 / HQW4	UTRS223ACH
225 Amp	Single	House Module			WCL204061T1RJ	
320 Amp	Single	OH	U1079-R-BL		HQST 4	UTH4300TCH
320 Amp	Single	UG	U1797-0-K3L-K2L-BL		HQDSW/SWD 4	UTH43369UCH
320 Amp	Single	OH/UG	U2448-x	H4330T		UTH4330TCH
200 Amp	Three	OH/UG	U7423-RXL	H7213T	HQND 5	
200 Amp	Three	OH/UG	U9701-RRL-BL		HQST 7 / HQW 7	
225 Amp	Three	Module			WCL2040B2T1RJ	
225 Amp	Three	Module			WCL2442B3T1RJ	
320 Amp	Three	OH/UG	U2120-x	UT-H7330-U	HQST 7	
320 Amp	Three	OH/UG	U2594-Y		HQDSW/SWD 7	
600 Amp	Three	OH/UG	U4667-xt-9506		(K-7T) 9817-9506	CH9506K7

Submit information to:  
[rryori@gdetn.com](mailto:rryori@gdetn.com)  
[kthornton@gdetn.com](mailto:kthornton@gdetn.com)

### Instrument Rated

Size	Terminals		Milbank	Durham	Siemens	Meter Devices
20 Amp *	8	Single Phase	UC7235-RL	R6821-8K	9804-8542	
20 Amp **	13	Three Phase	UC7461-RL	STS13-2K	9837-8512	W110U54522-5

### Pedestal Service Entrance

Size	Terminals	Midwest			
200 Amp	4		R281C1P6H		

\* 8 Terminal Base Requires Automatic Bypass Switch

\*\* 13 Terminal Base Requires test switch Durham # 1058 or Milbank # TS10-0111 (10 Pole)

### Specifications and Notes

- 1) **NON-APPROVED METER BASES WILL NOT BE ENERGIZED BY GDE**
- 2) Steel Construction and UL Approved with Label
- 3) Location shall be approved by GDE's Engineering Dept.
- 4) Shall be surface mounted and on a permanent structure controlled by the Customer.
- 5) Shall not be in areas that are closed off by porches, decks, patios, fences, walls, screens, etc.
- 6) GDE shall have unobstructed access to meter base.
- 7) Shall have a 6' clearance from any obstruction in front of meter base.
- 8) Shall be mounted 5'6" from ground to center of meter base.
- 9) GDE/Customer service wire will enter left side of meter base, customer load wires will exit right side facing meter base
- 10) Shall be installed to National Electric Code (NEC) requirements.
- 11) Instrument Rated bases shall have shorting ability to remove meter
- 12) 600 Amp and above services REQUIRE advance notice to be given to GDE Meter Department. Call 615-527-7006 or 615-527-7005.

### Instrument Transformers

All CT and PT's shall be provided by GDE.

CT cabinet size shall be 36 x 36 x 12 with a 3/4 inch plywood backing for mounting of Instrument Transformers. Steel or aluminum construction. CT cabinet must have provisions for a padlock.

Single Phase - Electrician shall provide 5 wires, (BLACK, RED, BROWN, ORANGE, WHITE)

3 Phase - Electrician shall provide 7 wires (BLACK, RED, BLUE, BROWN, ORANGE, YELLOW, WHITE)

No marking tape shall be used on wires.

All CT and PT wires shall be #12 copper conductor.

**Multi Ganged, Stacked meterbases, and Module Bases are APPROVED on a case by case bases.**

## **Decorative Street Lighting**

The following guidelines are for use by the subdivision developer to assist with the installation of decorative street lighting on the Gallatin Department of Electric (GDE) system.

### **Standards**

Decorative street lighting designed and serviced by GDE will only be allowed in areas with underground electric primary and City roads. If the road is private, GDE will not design or service street lighting. Any private road street lighting will be metered according to GDE specs.

GDE's Engineering Department will design and show the street lighting layout on GDE's conduit plan. The following general standards will be followed for the street lighting design.

1. A light will be placed at all public street intersections, roundabouts, and 90° turns.
2. A light will be placed in all cul-de-sacs
3. Standard spacing between lights will be approximately 300' with a max spacing of 400'.

### **Overview**

The developer is responsible for the installation of all lights, foundations, conduit, and wire. The developer will choose lights from GDE approved lights and provide GDE with one (1) spare decorative street light for each fifty (50) installed. The cost of the lights will be charged as aid to construction cost. This cost must be paid before GDE will release any material. Decorative lights can be picked up from GDE's warehouse once received. Decorative street lights must pass a City Codes electrical inspection, meet GDE's specs listed in **GDE Decorative Light Specs**, pg.12, and meet GDE's inspections listed in **GDE Decorative Light Inspections**, pg.12, before being energized. The developer will be responsible for repairs during the first year the light is energized.

### **Procedure to have lights energized**

A decorative street light will not be energized until passing GDE's final inspection and City Codes electric final inspection. After inspections have been completed, the developer or HOA may have the lights turned on for security reasons. The lights will be billed monthly according to GDE's Outdoor Lighting Rate to the developer or HOA until lights are converted to City of Gallatin account. Lights will be converted to City of Gallatin account once a permanent resident has service turned on to a house feeding from the same transformer as the decorative light. However, the developer or HOA may choose not to use the decorative street lights for security reasons and wait until the lights have been converted to the City of Gallatin account.

### **Temporary Electric Service Policy**

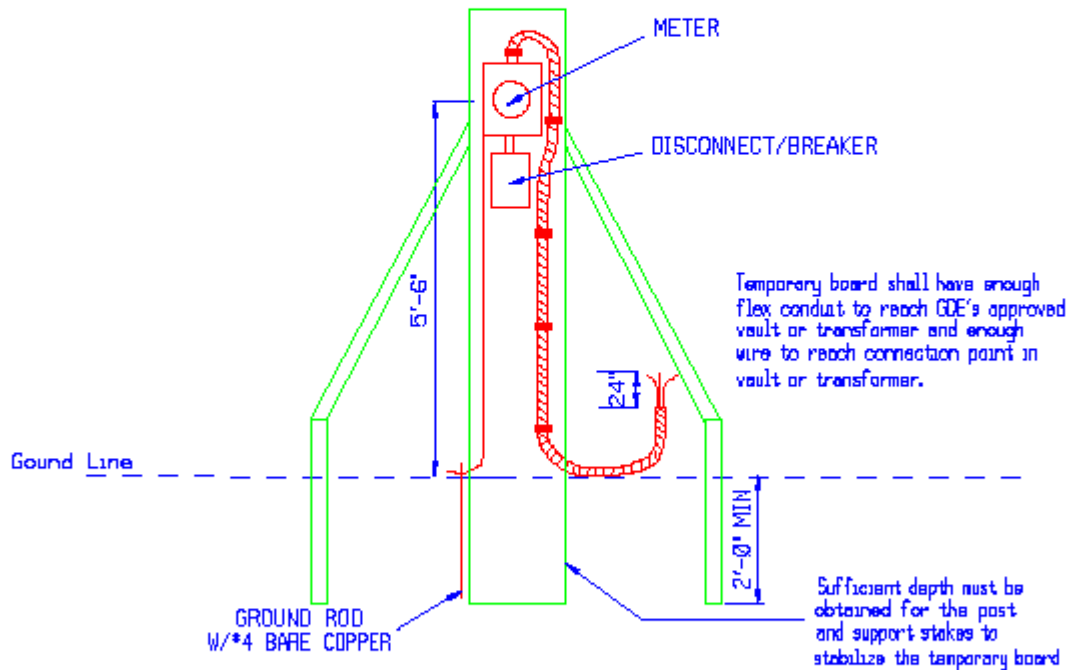
The Gallatin Department of Electricity (GDE) will provide electricity to customer owned temporary boards according to the following guidelines.

1. Temporary boards must be labeled with the address and lot number and pass an electrical inspection by the State Electrical Inspector each time the board is installed or relocated.
2. Temporary boards must be an underground fed temporary board unless approved by GDE's Engineering Department.
3. Temporary board location must be approved by GDE's Engineering Department.
4. Temporary boards that are approved for overhead installation shall be rigidly installed in the ground (2' min for post and braces) with braces or guys to adequately support the overhead service conductors and the weight of a 250lb man on a ladder, leaned against the temporary board. There shall be an eyebolt attachment for GDE's service conductors. The attachment point and ground clearance to service wire shall meet the National Electric Code (NEC) and National Electric Safety Code (NESC). The overhead temporary board shall not be installed more than 100' from GDE's approved pole.
5. GDE will charge a \$100.00 temporary board fee. This amount covers the installation and removal of the service wire. If additional trips are made, there will be extra charges. This charge does not include the meter service charge and deposit.
6. In addition to the cost from line 5, temporary boards requiring more than 100' of overhead service wire or when temporary construction is required, the total installation and removal cost will be paid by the customer before work will begin. The cost to install a transformer to feed a temporary board will be \$200.00.
7. Customers or contractors will not remove a temporary board until the meter and service wires have been disconnected and/or removed



GENERAL CONSTRUCTION NOTES:

- 1) The GDE engineer will spot the temporary board location upon request.
- 2) The temporary board shall be installed at least 3' from and no more than 18' from GDE's approved service point.
- 3) Temporary electric service boards are not to be installed on GDE poles or trees.
- 4) Each temporary board must be labeled with address and lot number, and pass an electric inspection by the State Electrical Inspector each time the board is installed or relocated.
- 5) The temporary board clearance from other objects must meet all NEC and NESC requirements.



IMPORTANT NOTE:

CUSTOMERS OR CONTRACTORS WILL NOT REMOVE A BOARD UNTIL THE METER AND THE SERVICE WIRES HAVE BEEN REMOVED.

GDE	UNDERGROUND TEMPORARY BOARD SERVICE	DATE 2/14/14
		STANDARD NUMBER UG TB

### GDE Underground Service Specifications

Inspection	Inspection
<b>Trench</b>	*Shall meet all Occupational Safety and Health Administration (OSHA) standards *Shall be free of construction debris and large/sharp rocks *Shall be a straight line from GDE's secondary box to meter base *Shall not be located under any permanent structures *Backfill, soil free of material that may damage conduit or gravel.
<b>Conduit</b>	*Conduit will be inspected prior to backfilling ditch. *Service size 200-400amp 3" schedule 40 PVC conduit *Service size above 400 amp shall be installed by owner *Expansion joint required on all services below meter base *Conduit above ground shall be schedule 80 PVC *Only two 90° 24" radius Schedule 80 PVC elbows may be used. *30" minimum depth with a minimum 12" separation (vertical and horizontal) from other utilities (excluding AT&T/Comcast service drops). *Pull String required
<b>Meter Base</b>	*Must be installed and meet GDE's meter base policy
<b>Ground rod/wire</b>	*Must be installed per NEC code requirements. (Driven in undisturbed soil)

**\* All inspection requirements must be met before notifying GDE for an inspection.**

### GDE Pole Setting Specifications

Pole Height	Set depth with dirt backfill
25'	5'
30'	5'
35'	5.5'



## GDE Decorative Light Specifications

Material	GDE Specs
<b>Conduit</b>	*1" schedule 40 PVC (unless otherwise specified) with 24" radius elbows
<b>Decorative Fixtures</b>	*See Approved Light Fixtures
<b>Decorative Pole</b>	*See Approved Light Poles
<b>Lamps</b>	*See specs listed in Approved Light Fixtures
<b>Photocell</b>	*See specs listed in Approved Light Fixtures
<b>Conductor</b>	*NEMA Listed THHN/THWN Copper, 600v, 90° C #12, #4, or #6 AWG (must maintain less than 5% voltage drop from source).
<b>Pole Base Fuses and Fuse Blocks</b>	

## GDE Decorative Light Inspections

Inspection	Requirements
<b>Conduit</b>	<ul style="list-style-type: none"> <li>*Conduit will be inspected by Gallatin Codes Department prior to backfilling ditch.</li> <li>*All work shall be performed to the GDE's conduit drawings and details.</li> <li>*24" depth with minimum of 12" separation (vertical and horizontal) from other utilities.</li> <li>*Backfill shall be soil free of material that may damage conduit or gravel.</li> <li>*Conduit damaged before lights are energized must be replaced by developer.</li> <li>*All conduit installed in existing GDE equipment must be coordinated with GDE.</li> </ul>
<b>Footing</b>	<ul style="list-style-type: none"> <li>*Shall be built to GDE Footing Detail.</li> <li>*First inspection shall be scheduled before concrete has been poured.</li> <li>*Second inspection shall be scheduled after concrete has been poured.</li> <li>*Poles shall not be installed until second inspection has been completed.</li> </ul>
<b>Final</b>	<ul style="list-style-type: none"> <li>*All wiring, connectors, and fuses installed.</li> <li>*Poles plumb, level, and securely mounted.</li> <li>*Fixture oriented correctly with street. ("street side" embossed on fixture must be turned toward the street)</li> </ul>



**GALLATIN DEPARTMENT OF ELECTRICITY**  
P.O. BOX 1555 • 135 JONES STREET  
GALLATIN, TENNESSEE 37066  
(615) 452-5152 • FAX (615) 452-6060  
[www.gallatinelectric.com](http://www.gallatinelectric.com)

---

## **GDE Final Conduit Inspection Check List**

This checklist is to assist developers with the requirements for a GDE final conduit inspection. Please insure the requirements have been met before signing, dating, and returning form to GDE for a final conduit inspection. This list is meant to be a guide and is subject to change without notice. Specifications available [www.gallatinelectric.com/engineering](http://www.gallatinelectric.com/engineering).

- 1. Property Pins installed and labeled.
- 2. Curbs installed.
- 3. Grade within 6" of final grade from back of utility easement to curb.
- 4. All GDE conduits and ground sleeves installed in utility easement.
- 5. All secondary vaults installed per GDE Secondary Vault Detail.
- 6. Ground sleeves installed per GDE Ground Sleeve Details.
  - 6A. Ground sleeves backfield to within 6" of top of pad.
  - 6B. Ground sleeves level.
  - 6C. Conduits cut 12" below top of ground sleeve
  - 6D. Conduits arranged in ground sleeve per the GDE Ground Sleeve Details.
  - 6E. No trash inside of ground sleeve.
- 7. Conduits arranged per GDE Underground Distribution spec for underground primary construction, or GDE Underground Secondary Conduit System spec for overhead primary construction.
  - 7A. 36" minimum spacing between GDE 3" secondary conduit and communication conduits.
  - 7B. 18" minimum spacing between GDE ground sleeve and communication conduits on underground primary construction.
  - 7C. 24" minimum spacing between pole and GDE 3" secondary conduit on overhead primary construction.
- 8. 500lb minimum pull string in all conduits.
- 9. All conduits installed per GDE Conduit Layout.

Signature: \_\_\_\_\_ Date: \_\_\_\_\_

LIGHTING THE WAY FOR THE CITY OF GALLATIN



**GALLATIN DEPARTMENT OF ELECTRICITY**  
 PO BOX 1555 • 135 JONES STREET • GALLATIN, TN 37066  
 (615)452-5152 • FAX (615)452-6060 [www.gdetn.com](http://www.gdetn.com)

**Residential Worksheet**

Date : \_\_\_\_\_

Subdivision : \_\_\_\_\_

Developer : \_\_\_\_\_

Phone : \_\_\_\_\_ Email : \_\_\_\_\_

UG Utility Contractor : \_\_\_\_\_

Phone : \_\_\_\_\_ Email : \_\_\_\_\_

**Aid To Construction**

Lots :	
Aid per lot :	\$ 1,000.00
Lot Total :	\$ -
Distance from transformer :	
(if more than 150')	
Cost per foot :	\$ 10.00
Additional distance aid :	\$ -
Street Light Cost :	
<b>TOTAL AID TO CONSTRUCTION : \$ -</b>	

**Residential Checklist**

- Final Plat Submitted
- Provide electronic cad layout
- Select decorative lights from approved list
- GDE to design equipment layout & developer acquires approved layout
- Pay aid to construction
- GDE to order equipment
- Provide all ditching & conduit
- Call GDE for inspection of ditching and equipment placement
- Receive GDE approval of ditching and conduit placement
- Backfill 1' of clean dirt or #67 gravel if clean dirt unavailable
- Install marking tape
- Transport all vaults/ground sleeves
- Place all vaults/groundsleeves with gravel base
- Complete backfill to final grade/install curbs/pour concrete pads
- GDE Final Conduit Inspection Checklist Complete
- Call GDE for final inspection
- GDE installs underground primary wire, connections and switch cabinets
- Developer installs all streetlights and associated wiring

GDE Engineering : Mike Taylor (615)527-7004 [mtaylor@gdetn.com](mailto:mtaylor@gdetn.com)  
 Brandon Hesson (615)527-7008 [bhesson@gdetn.com](mailto:bhesson@gdetn.com)



**GALLATIN DEPARTMENT OF ELECTRICITY**  
 PO BOX 1555 • 135 JONES STREET • GALLATIN, TN 37066  
 (615)452-5152 • FAX (615)452-6060 [www.edetn.com](http://www.edetn.com)

**Multi-Family Units Worksheet**

Date : \_\_\_\_\_

Subdivision : \_\_\_\_\_

Developer : \_\_\_\_\_

Phone : \_\_\_\_\_ Email : \_\_\_\_\_

UG Utility Contractor : \_\_\_\_\_

Phone : \_\_\_\_\_ Email : \_\_\_\_\_

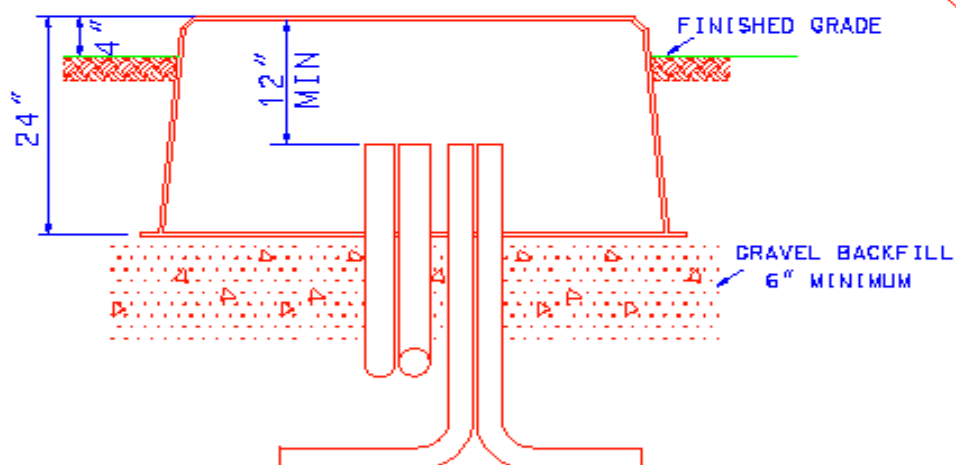
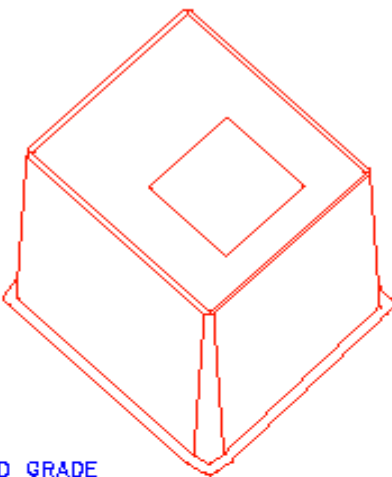
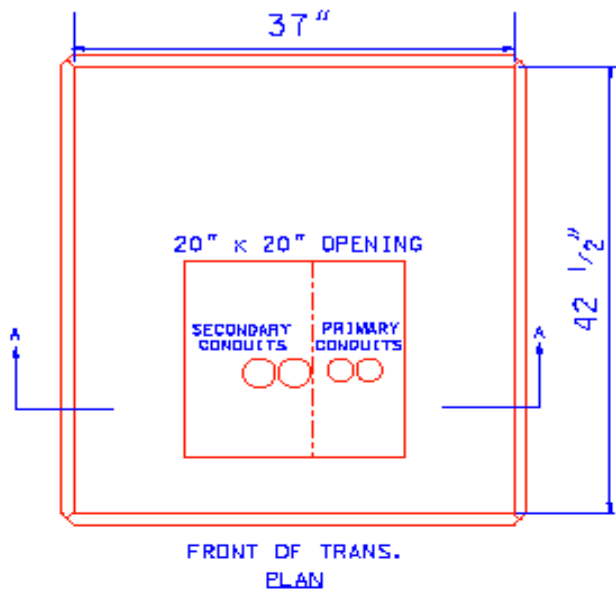
**Aid To Construction**

Lots :	0
Aid per lot : \$	500.00
Lot Total : \$	-
Distance from existing line :	
Cost per foot : \$	35.00
Additional distance aid : \$	-
Street Light Cost : \$	-
<b>TOTAL AID TO CONSTRUCTION : \$</b>	<b>-</b>

**Multi-Unit Checklist**

- Final Plat Submitted
- Provide electronic cad layout
- Select decorative lights from approved list
- GDE to design equipment layout & developer acquires approved layout
- Pay aid to construction
- GDE to order equipment
- Provide all ditching & conduit
- Call GDE for inspection of ditching and equipment placement
- Receive GDE approval of ditching and conduit placement
- Backfill 1' of clean dirt or #67 gravel if clean dirt unavailable
- Install marking tape
- Transport all vaults/ground sleeves
- Place all vaults/groundsleeves with gravel base
- Complete backfill to final grade/install curbs/pour concrete pads
- GDE Final Conduit Inspection Checklist Complete
- Call GDE for final inspection
- GDE installs underground primary wire, connections and switch cabinets
- Developer installs all streetlights and associated wiring

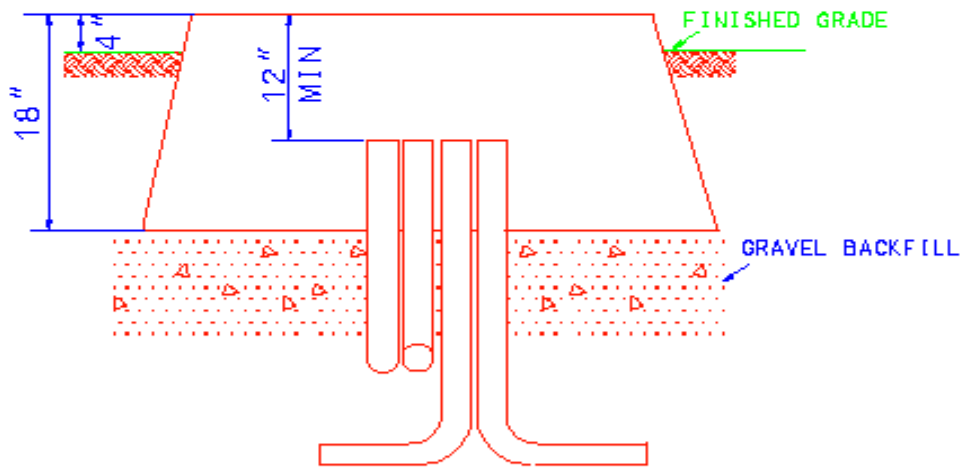
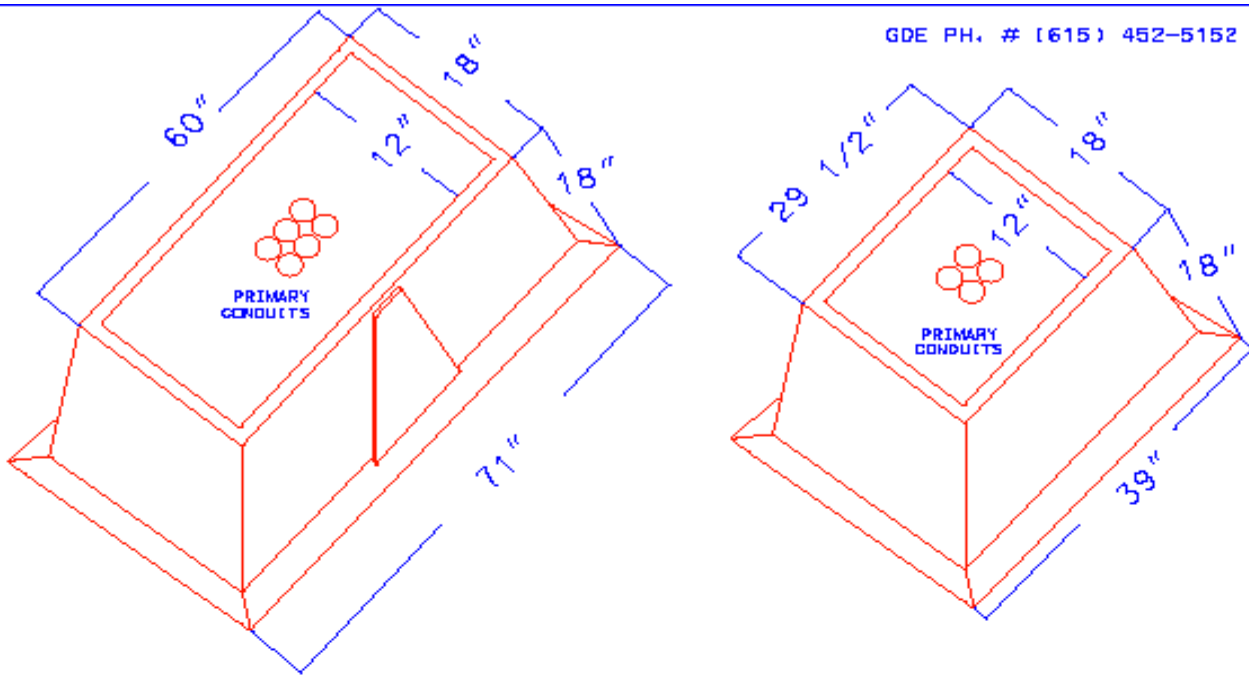
GDE Engineering : Mike Taylor (615)527-7004 [mtaylor@gdetn.com](mailto:mtaylor@gdetn.com)  
 Brandon Hesson (615)527-7008 [bhesson@gdetn.com](mailto:bhesson@gdetn.com)



- NOTE:
- 1 - PRIMARY & SECONDARY CONDUITS TO BE LOCATED AS SHOWN ABOVE.
  - 2 - CONDUITS TO STOP AT LEAST 12" BELOW TOP OF PAD.
  - 3 - PRIMARY CONDUITS TO BE 48" DEEP.
  - 4 - SECONDARY CONDUITS TO BE 30" DEEP.
  - 5 - SLEEVE TO SET ON GRAVEL BACKFILL FROM BOTTOM OF DITCH TO PAD BOTTOM.
  - 6 - CONDUIT & SLEEVES DAMAGED BEFORE WIRE IS INSTALLED MUST BE REPLACED/REPAIRED BY DEVELOPER.

<h1 style="font-size: 2em; margin: 0;">G D E</h1>	<p>TRANSFORMER GROUND SLEEVE DETAIL</p> <p>SINGLE PHASE</p>	<p>DATE 2/15/13</p>
		<p>STANDARD NUMBER</p> <h2 style="font-size: 1.5em; margin: 0;">UMF-1P</h2>





NOTE:

SECTION A-A

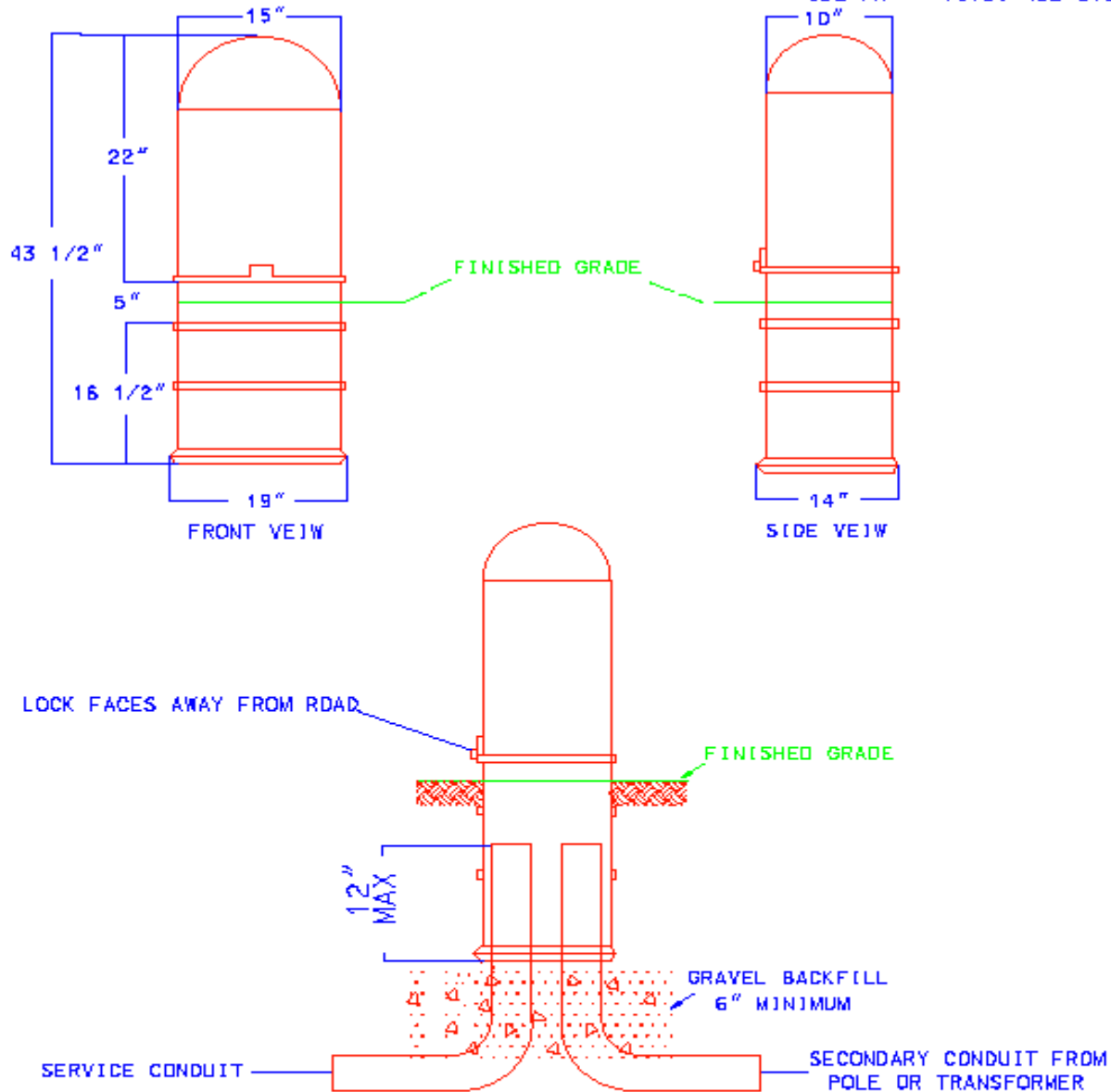
- 1 - PRIMARY CONDUITS TO BE LOCATED AS SHOWN ABOVE.
- 2 - CONDUITS TO STOP AT LEAST 12" BELOW TOP OF PAD.
- 3 - PRIMARY CONDUITS TO BE 48" DEEP.
- 5 - SLEEVES TO SET ON GRAVEL BACKFILL FROM BOTTOM OF DITCH TO PAD BOTTOM.
- 6 - CONDUIT & SLEEVES DAMAGED BEFORE WIRE IS INSTALLED MUST BE REPLACED/REPAIRED BY DEVELOPER.

G D E

PRIMARY VAULT GROUND SLEEVE DETAIL  
SINGLE AND THREE PHASE

DATE: 2/15/13

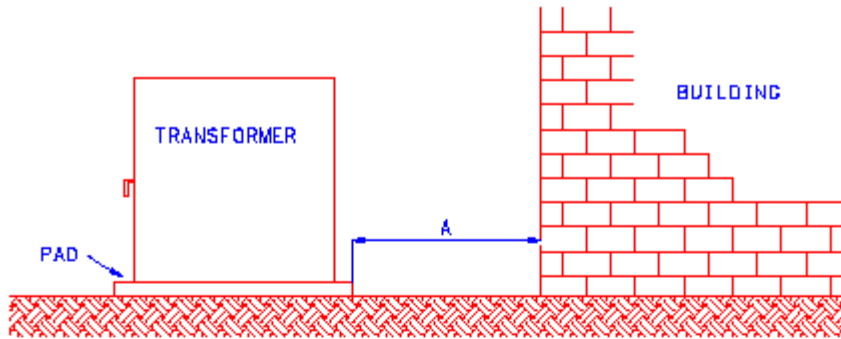
STANDARD  
NUMBERS  
UPV-1P  
UPV-3P



NOTE:

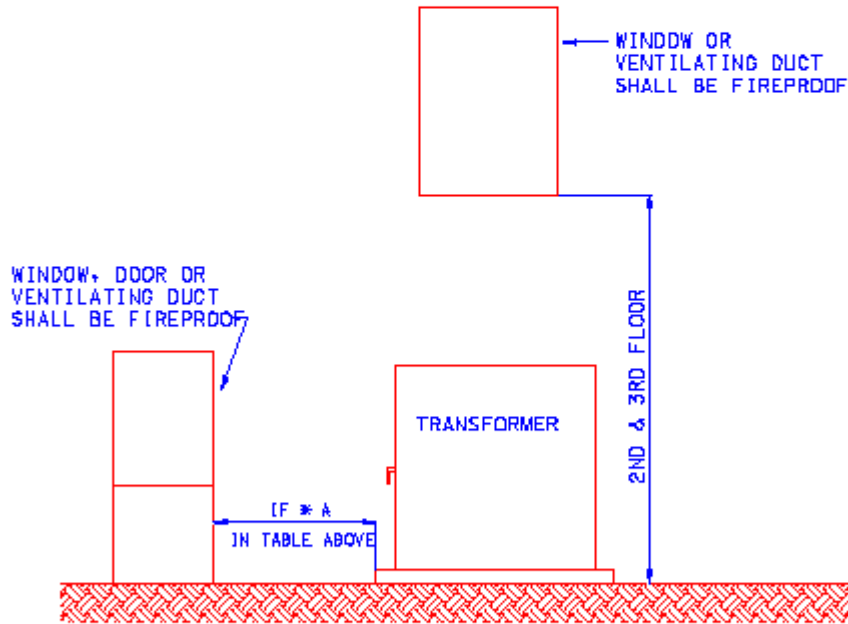
- 1 - SECONDARY CONDUITS TO BE LOCATED AS SHOWN ABOVE.
- 2 - SECONDARY CONDUITS TO BE 30" DEEP.
- 3 - CONDUITS TO STOP A MAX OF 12" ABOVE BOTTOM OF BOX.
- 4 - BOX TO BE LEVEL AND PLUMB
- 5 - CONDUIT & BOXES DAMAGED BEFORE WIRE IS INSTALLED MUST BE REPLACED/REPAIRED BY DEVELOPER.

G D E	SECONDARY VAULT	DATE: 11/08/18
		STANDARD NUMBER UGSECV



<u>DIMENSION A</u>	<u>TRANSFORMER KVA</u>	<u>BUILDING WALL &amp; EAVES</u>
10'	0-75	NOT FIRE RESISTANT
20'	76-333	NOT FIRE RESISTANT
30'	334 AND LARGER	NOT FIRE RESISTANT
3'	ALL SIZES	FIRE RESISTANT (8" BRICK, ETC.)

ELEVATION VIEW



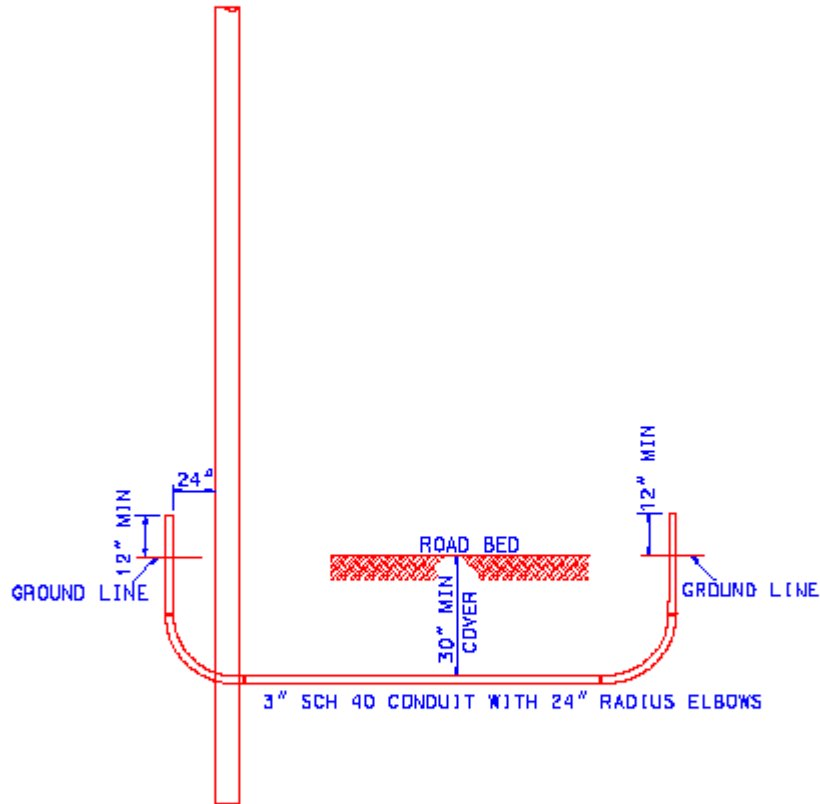
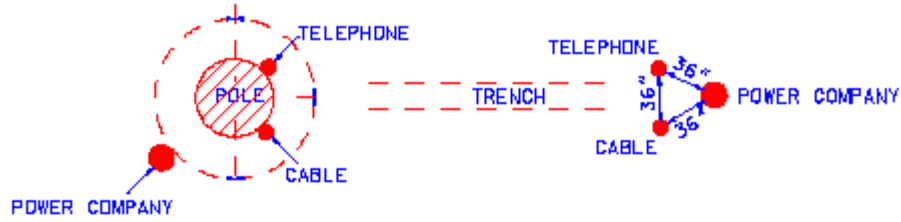
ELEVATION VIEW

GDE

TYPICAL SITING REQUIREMENTS  
FOR PAD-MOUNT TRANSFORMER

DATE 11/30/00

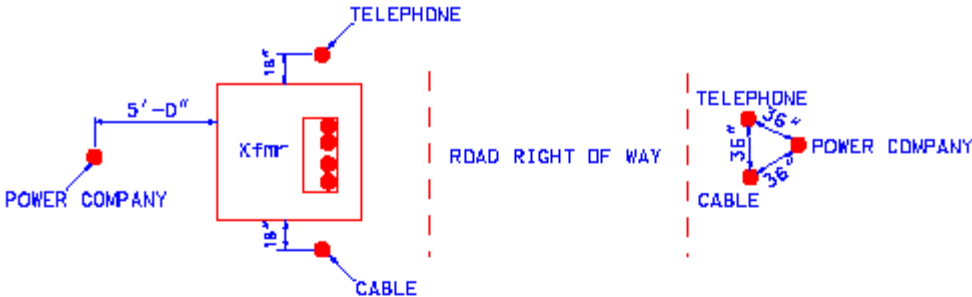
STANDARD  
NUMBER  
UMT-1



**NOTES:**

- 1) CONTRACTOR TO SUPPLY AND INSTALL CONDUIT WITH PULL STRING
- 2) CONTRACTOR TO SUPPLY AND INSTALL CAPS AT BOTH ENDS OF CONDUIT
- 3) PULL STRING TO HAVE AT LEAST 500 LB TENSILE STRENGTH
- 4) CABLE TV AND PHONE CONDUITS INSTALLED ON STREET SIDE OF POLE
- 5) POWER COMPANY CONDUIT TO BE INSTALLED ON SIDE OF POLE AWAY FROM STREET
- 6) CONDUIT DAMAGED BEFORE WIRES INSTALLED MUST BE REPLACED/REPAIRED BY DEVELOPER

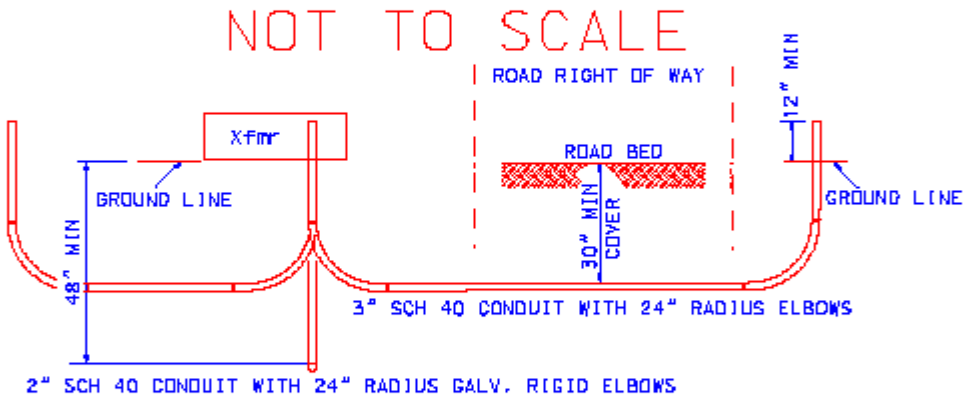
GDE	UNDERGROUND SECONDARY CONDUIT SYSTEM	DATE: 4/1/04
		STANDARD NUMBER  USEC



NOT TO SCALE

NOTES:

POWER COMPANY CONDUITS AND TRANSFORMER TO BE LOCATED IN THE UTILITY EASEMENT



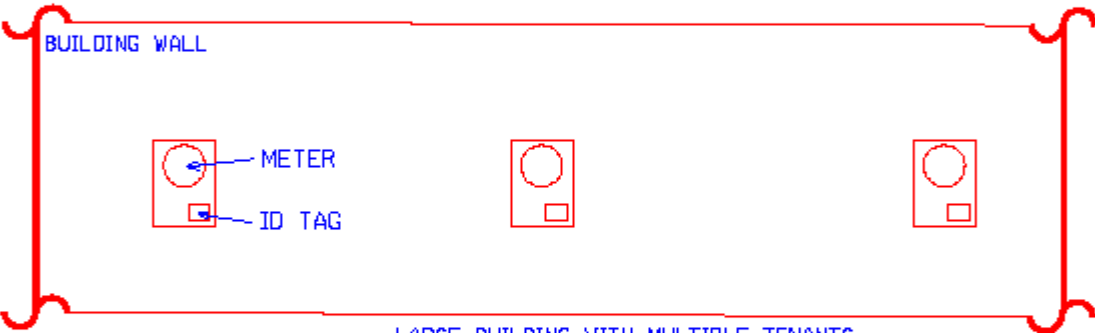
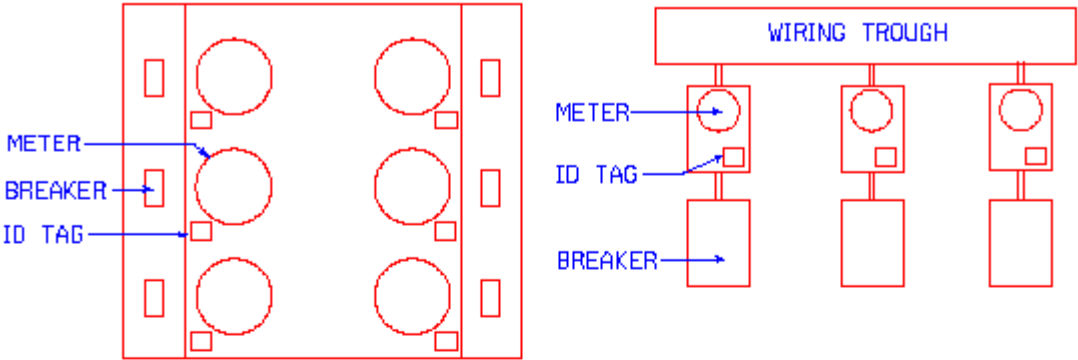
NOT TO SCALE

NOTES:

- 1) CONTRACTOR TO SUPPLY AND INSTALL CONDUIT WITH PULL STRING
- 2) CONTRACTOR TO SUPPLY AND INSTALL CAPS AT BOTH ENDS OF CONDUIT
- 3) PULL STRING TO HAVE AT LEAST 500 LB TENSILE STRENGTH
- 4) ALL CONDUIT TO BE INSPECTED BY GDE PRIOR TO BACKFILLING
- 5) CONDUIT DAMAGED BEFORE WIRE IS INSTALLED MUST BE REPLACED/REPAIRED BY DEVELOPER

GDE	UNDERGROUND DISTRIBUTION SYSTEM	DATE: 7/14/05
		STANDARD NUMBER  UDIST

Wiring troughs are no longer allowed, must now use secondary tap boxes.



NOTES:

- 1- Buildings such as apartment buildings, retail strip centers, duplexes, triplexes, town homes, and etc. which have more than one meter shall have all meters labeled to identify the premises they serve.
- 2- The label shall have the apartment/building number or street address.
- 3- The label shall be outdoor rated brass or stainless steel.
- 4- The labels shall be attached to the meter base with rivets or screws.
- 5- The identification numbers/letters shall be stamped or engraved.
- 6- The identification numbers/letters shall have a character size of at least 1/8" in height.

<h1>GDE</h1>	LABELING FOR MULTI-METERED INSTALLATIONS	DATE 7/28/15
		STANDARD NUMBER  LAB-1